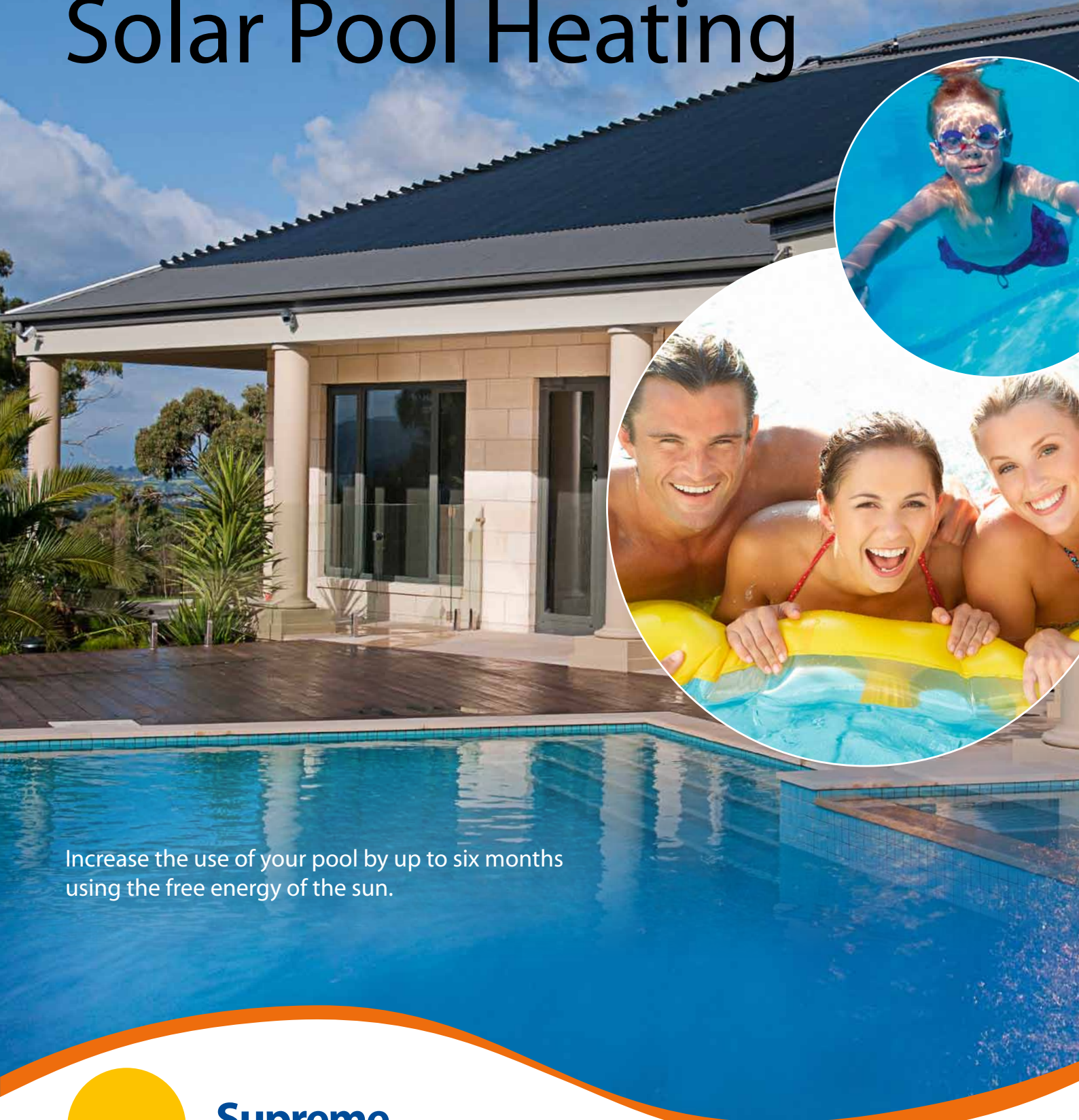


Harness the power of the sun

Heatseeker Plus Solar Pool Heating



Increase the use of your pool by up to six months
using the free energy of the sun.



**Supreme
Heating**

Specialists in heating for homes & pools



Solar Pool Heating
Heatseeker Plus

Harness the power of the sun

Getting the most out of your pool

Swimming pools are a great source of exercise and entertainment. Unfortunately, most pools are used for less than three months of the year because they are too cold.

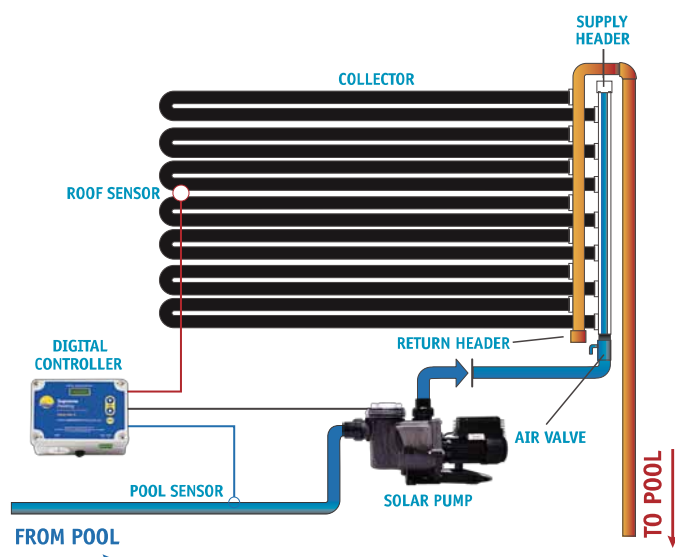
Solar pool heating is energy and cost efficient, low maintenance, and very easy to operate.

Our exclusive Heatseeker Plus solar pool heating is a reliable, high performance product, which is capable of increasing your water temperature by approximately 10°C, ensuring you, your family and pool friendly neighbours get maximum fun, value and exercise out of that big watery investment in the backyard.

How does solar heating work?

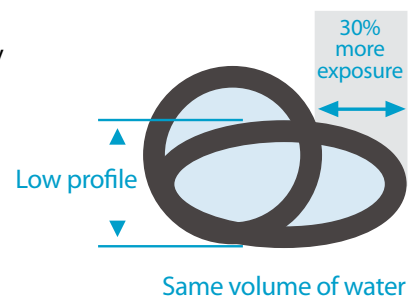
Pool water is circulated through a series of tubes (the collector) installed on a suitably positioned roof. As the pool water is circulated through the tubes, it is heated from the sun's free energy and then returned to the pool. The water temperature can be managed by an automatic control system.

This form of heating is very inexpensive to operate and is ecologically friendly unlike fossil fuel heaters (gas or electric), which create pollution through their harmful products of combustion.

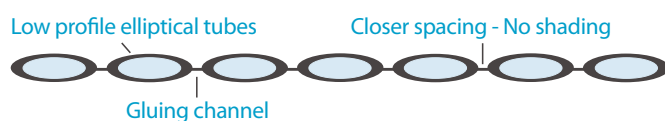


Unique in design - Heatseeker Plus profile

The sun provides a certain amount of energy per m^2 for our collector to absorb. The unique design of our Heatseeker Plus profile capitalises on the available energy and therefore has a higher efficiency rating than the original circular tubes.

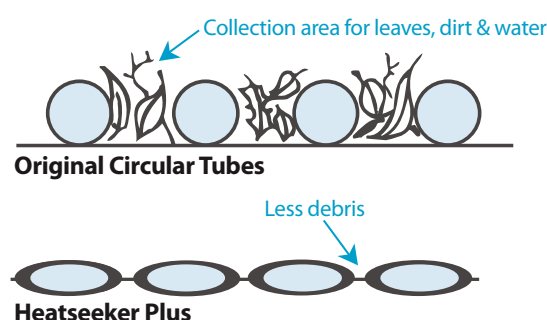


Our Heatseeker Plus elliptical shaped tubes allow up to 30% more exposure to solar radiation compared to the circular tubes. Also because of its low profile and elliptical shape, the tubes can be spaced closer together without shading each other. That means we incorporate 25% more tubing into a m^2 of collector than most other systems.



Another great feature of the Heatseeker Plus design is that it will collect less debris between its tubing. This is a distinct advantage in leafy areas. It ensures consistent performance from the collector and makes collector cleaning unnecessary.

The increased wall thickness of our Heatseeker Plus profile ensures that the tubing has sufficient thickness to allow for long term wear and tear, which is unavoidable when exposed to the sun.



Australia's first complete full length manifold piping system

The Heatseeker Plus manifold piping system is outstanding in performance and durability.

Our service history on our solar heating clearly indicates that the most vulnerable part of any system has been the manifolds (where the collector tubes join into flow and return pipes). The Heatseeker Plus system has been carefully researched and designed to minimise potential problems. This is achieved through the choice of better materials and the use of improved construction techniques.

The end result is a solar system providing outstanding strength and durability far superior to any other system.

Why is the Heatseeker Plus manifold piping system so much better?

- Prefabricated in one continuous length. No holes drilled and no parts glued together.
- Easy to repair - can be taken apart or replaced.
- Minimal leak potential - longer life.
- Heatseeker Plus sleeves provide improved pressure resistance (where required).
- Low maintenance.
- Quicker heat up times.
- Over 15 year's infield service life.
- Blends into roof line appearing almost invisible.
- Made to measure to suit individual site requirements.
- Simple to install and service.

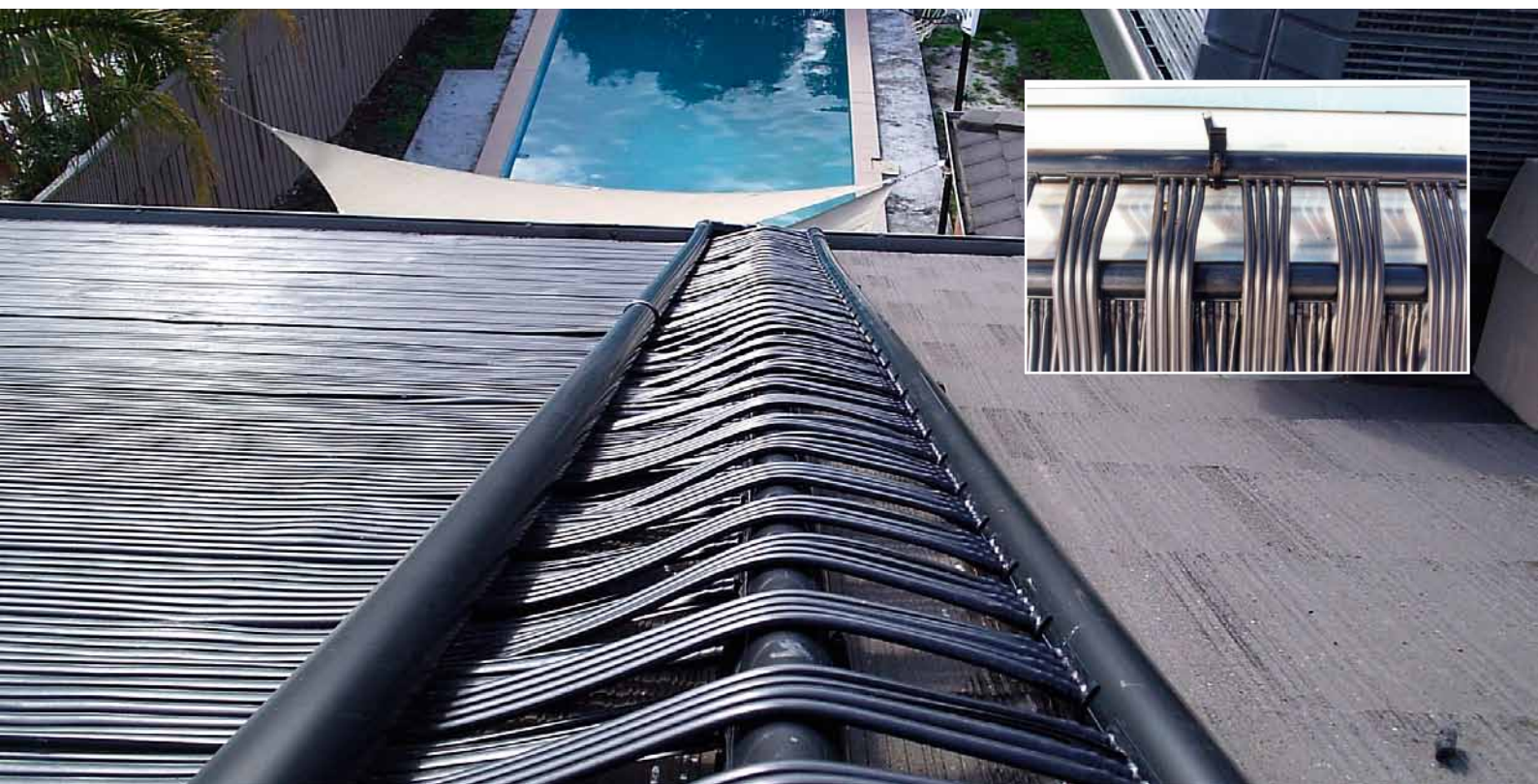
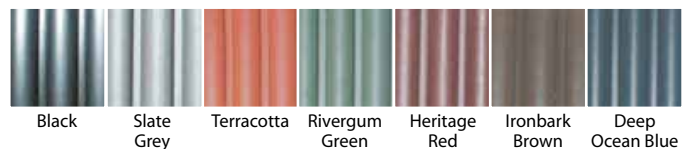


Will solar heating affect the aesthetics of my home?

Supreme Heating recognises the pride you take in the appearance of your home. Combine this with the pride taken in our own work, and the end result is a solar system that doesn't just provide you with months of warm, comfortable swimming, but does so with minimal interference to the aesthetics of your home.

Heatseeker Plus Colours

Black has always been the traditional colour of collector, but it's now possible to match the colour of your roof with our range of Heatseeker Plus colours.



End Manifolds - giving pool owners a choice!

Heatseeker Plus End Manifolds take the aesthetic appeal of the solar system on your roof one step further. The low profile end manifold makes the loop returns or the end of the solar strip sit flat to the roof. Gone are the days of the ugly loops!

End manifolds are also built with a lugged anchor point for added protection against high winds and storms which can damage the solar system. The design of the end manifolds water mixing chamber ensures minimal resistance to the flow of water as it is heated up meaning that not only can you have a great looking solar system, but one that works exactly the way it should.

End manifolds are an optional extra and are ideally suited for highly visible roofs.



Purpose-Built Solar Pump

Manufactured exclusively in Australia since 2005, Supreme Heating's purpose-built SS Series Solar Pumps were the first to be released into the market.

The SS Solar Pump has been specifically designed and manufactured to suit the application where the pump needs to "prime" against the weight of the pool water as it lifts up onto a high roof. Basically it has higher lifting/priming capacity than a conventional pool pump and the flow characteristics have been modified to produce the correct rate for each m² of collector as per Australia Standard AS3634. This is important as correct flow represents "optimum" efficiency and heat transfer into your swimming pool.



Research & Development

At Supreme Heating, we pride ourselves on being environmental leaders in the solar heating market. Our test facilities in Melbourne ensure cutting edge technology performs and lasts as promised.

Test results indicate a 33% increase in efficiency against our opposition. This increase has been the result of years of experience in the industry, formulating our product to optimise performance.

"The environmentally friendly choice"



Automatic Control Systems

Why not allow the water temperature to be managed by an automatic control system? Controlling your solar system may no longer be a daily chore.

Supreme Heating has combined the latest technology, together with user friendly concepts in the development of our extensive range of automatic solar controllers.

Our controller range has been designed to suit varying types of systems. The most commonly used controllers are our Aqua-Gen 3 and SSV7RT that are also available with optional wireless roof sensors, which eliminate the need for conduit and underground wiring.

Aqua-Gen 3

Suitable for systems where the pool has provisions for solar (a separate suction and return line dedicated to the solar system).



Features	Benefits
Automatic differential temperature control. Dual sensor - roof / pool.	Optimises solar gain - greater performance and warmer water.
Sensor touch pad.	Easy operation.
Thermostat set temperature.	Stops pool overheating - greater comfort levels.
'Winter' mode - flushes water once a day through solar collector.	Protects pump motor from condensation - longer life. No stagnant water in collectors, which can shorten the life span of system.
Auto sampling - checks water temperature every two hours when the pool has reached thermostat set temperature.	Greater accuracy of temperature readings - optimum performance.
Tropical mode.	Greater comfort levels.
Anti-freeze protection.	Protects overall system from frost damage - longer life.
Time clock function.	Enables the ability to set start/finish times, reducing the maintenance.
LCD (liquid crystal display) module.	Brighter screen for better visibility.

SSV7RT

Suitable for systems where the solar is plumbed into the existing pool plumbing (no separate suction and return line dedicated to the solar system) and operates the filter time-clock and solar pump.



Features	Benefits
Automatic differential temperature control. Dual sensor - roof / pool.	Optimises solar gain - greater performance and warmer water.
Sensor touch pad.	Easy operation.
Thermostat set temperature.	Stops pool overheating - greater comfort levels.
'Winter' mode - flushes water once a day through solar collector.	Protects pump motor from condensation - longer life. No stagnant water in collectors, which can shorten the life span of system.
Auto sampling - checks water temperature every two hours when the pool has reached thermostat set temperature.	Greater accuracy of temperature readings - optimum performance.
Tropical mode.	Greater comfort levels.
Adjustable digital time clock with battery back up.	Easy operation.
LCD (liquid crystal display) module.	Brighter screen for better visibility.
Can be optioned with an auxiliary 'save mode' for heat pumps or gas boosted systems.	Saves on energy.

Optional Wireless Roof Sensors



BR (Battery) Remote Roof Sensor.
(available with Aqua-Gen 3 model only).

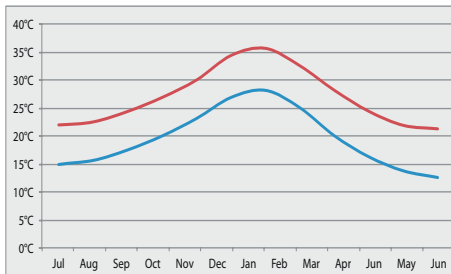


PV (Photovoltaic) Remote Roof Sensor.

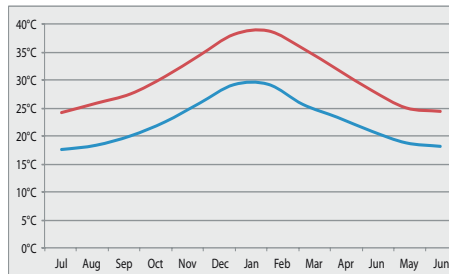


Performance Guide

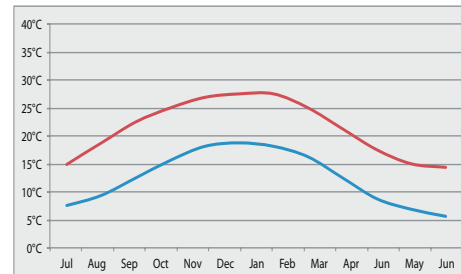
Adelaide



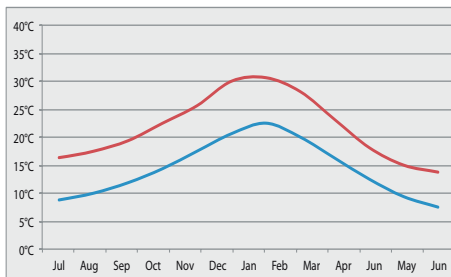
Brisbane



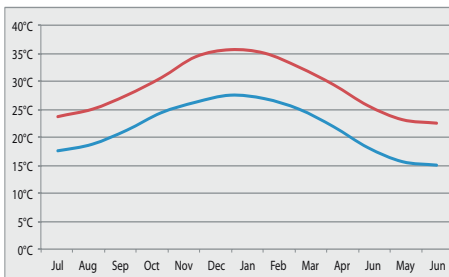
Hobart



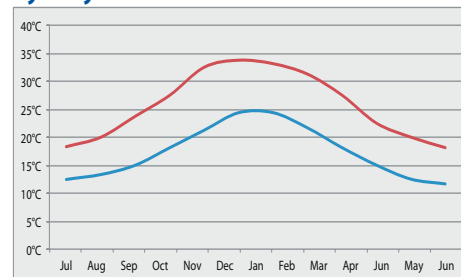
Melbourne



Perth



Sydney



— Heated — Unheated

Contact

Head Office

9 Lucknow Crescent
 Thomastown VIC 3094
 Distributors in NSW, QLD, SA & WA
 Phone: 1300 787 978
 Fax: 1300 887 879
www.supremeheating.com.au



**Supreme
Heating**

Specialists in heating for homes & pools